

# FACILITIES & CAPABILITIES

|                     | SIZE       | SQUARE FEET | CEILING HEIGHT | 8 X 10 EXHIBITS | THEATER | CLASS ROOM | CONFERENCE | U-SHAPE | BANQUET | RECEPTION | BUFFET | DINNER DANCE | HOLLOW SQUARE | TABLE TOPS |
|---------------------|------------|-------------|----------------|-----------------|---------|------------|------------|---------|---------|-----------|--------|--------------|---------------|------------|
| De Anza Ballroom    | 128' x 83' | 10,655      | 13' 5"         | 59              | 1,000   | 520        | 124        | 150     | 750     | 1,000     | 600    | 650          | 160           | 65         |
| De Anza I or II     | 39' x 84'  | 3,275       | 13' 5"         | 20              | 350     | 150        | 64         | 68      | 170     | 300       | 130    | 120          | 80            | 25         |
| De Anza III         | 49' x 84'  | 4,115       | 13' 5"         | 27              | 425     | 220        | 80         | 80      | 220     | 400       | 170    | 180          | 88            | 27         |
| De Anza Foyer       |            | 3,287       | 9' 9"          | 21              |         |            |            |         |         | 300       |        |              |               | 26         |
| Bonsai Ballroom     | 67' x 38'  | 2,546       | 10'            | 10              | 200     | 130        | 60         | 50      | 150     | 200       | 130    | 120          | 60            | 15         |
| Bonsai I or II      | 26' x 38'  | 988         | 10'            |                 | 70      | 55         | 25         | 30      | 50      | 150       | 40     | 30           | 30            | 8          |
| Bonsai III          | 15' x 38'  | 570         | 10'            |                 | 30      | 18         | 24         |         | 24      | 30        | 16     |              |               | 4          |
| Portola Room        | 51' x 38'  | 2,529       | 7' 9"          | 15              | 125     | 60         | 48         | 40      | 120     | 150       | 80     | 80           | 48            | 15         |
| Driftwood I         | 42' x 15'  | 712         | 8' 10"         |                 | 50      | 42         | 30         | 36      | 56      | 30        | 20     | 20           | 38            |            |
| Driftwood II        | 23' x 20'  | 460         | 8' 10"         |                 | 36      | 21         | 15         | 18      | 32      | 36        | 20     | 15           | 24            |            |
| Cottonwood Room     | 25' x 60'  | 1,500       | 8'             |                 | 80      | 70         | 46         | 36      | 80      | 100       | 60     | 60           | 40            |            |
| Cottonwood I or II  | 25' x 30'  | 750         | 8'             |                 | 40      | 30         | 20         | 18      | 40      | 75        | 30     |              | 24            |            |
| Ironwood Room       | 25' x 56'  | 1,400       | 8'             |                 | 80      | 70         | 46         |         | 80      | 100       | 60     | 60           | 40            |            |
| Ironwood I or II    | 25' x 28'  | 700         | 8'             |                 | 40      | 30         | 20         | 18      | 40      | 75        | 30     |              | 24            |            |
| Redwood Room        | 25' x 56'  | 1,400       | 8'             |                 | 80      | 70         | 46         |         | 80      | 100       | 60     | 60           | 40            |            |
| Redwood I or II     | 25' x 28'  | 700         | 8'             |                 | 40      | 30         | 20         | 18      | 40      | 75        | 30     |              | 24            |            |
| Executive Boardroom |            | 760         | 8' 6"          |                 |         |            | 20         |         |         |           | 18     |              |               |            |

## MONTEREY CONFERENCE CENTER

|                    |             |        |     |     |       |       |     |    |       |       |     |     |     |     |
|--------------------|-------------|--------|-----|-----|-------|-------|-----|----|-------|-------|-----|-----|-----|-----|
| Serra Ballroom     | 135' x 140' | 19,150 | 15' | 125 | 2,000 | 1,250 | 78  | 96 | 1,140 | 1,900 | 900 | 990 | 140 | 120 |
| Serra I            | 78' x 135'  | 10,500 | 15' | 57  | 750   | 700   | 62  | 96 | 460   | 1,000 | 460 | 480 | 100 | 64  |
| Serra II           | 64' x 135'  | 8,650  | 15' | 55  | 725   | 550   | 62  | 96 | 450   | 800   | 300 | 350 | 100 | 47  |
| Steinbeck Ballroom | 70' x 139'  | 9,730  | 18' | 55  | 984   | 600   | 104 | 96 | 600   | 950   | 400 | 540 | 144 | 56  |
| Steinbeck I        | 48' x 70'   | 3,430  | 18' | 20  | 360   | 220   | 64  | 72 | 240   | 300   | 200 | 200 | 80  | 21  |
| Steinbeck IA       | 22' x 40'   | 880    | 18' | 6   | 90    | 56    | 32  | 32 | 60    | 85    | 50  | 40  | 32  | 7   |
| Steinbeck IB       | 24' x 40'   | 960    | 18' | 6   | 96    | 56    | 32  | 32 | 60    | 95    | 50  | 40  | 32  | 7   |
| Steinbeck IC       | 22' x 40'   | 880    | 18' | 6   | 90    | 56    | 32  | 32 | 60    | 85    | 50  | 40  | 32  | 7   |
| Steinbeck II       | 39' x 70'   | 2,730  | 18' | 15  | 320   | 167   | 56  | 68 | 180   | 250   | 180 | 150 | 70  | 15  |
| Steinbeck III      | 48' x 70'   | 3,430  | 18' | 20  | 350   | 260   | 64  | 64 | 230   | 300   | 200 | 200 | 80  | 22  |
| Colton             | 29' x 57'   | 1,653  | 12' | 6   | 160   | 90    | 50  | 50 | 110   | 150   | 99  | 80  | 62  | 11  |
| Colton I           | 19' x 29'   | 551    | 12' |     | 50    | 37    | 24  | 26 | 40    | 50    | 30  |     | 28  | 5   |
| Colton II          | 19' x 29'   | 551    | 12' |     | 50    | 37    | 24  | 26 | 40    | 50    | 30  |     | 28  | 5   |
| Colton III         | 19' x 29'   | 551    | 12' |     | 50    | 37    | 24  | 26 | 40    | 50    | 30  |     | 28  | 5   |
| Stevenson I        | 23' x 22'   | 506    | 12' |     | 35    | 24    | 18  | 18 | 32    | 50    | 20  |     | 18  |     |
| Stevenson II       | 27' x 22'   | 594    | 12' |     | 50    | 29    | 18  | 18 | 32    | 50    | 20  |     | 24  |     |

## OUTDOOR EVENT SPACE

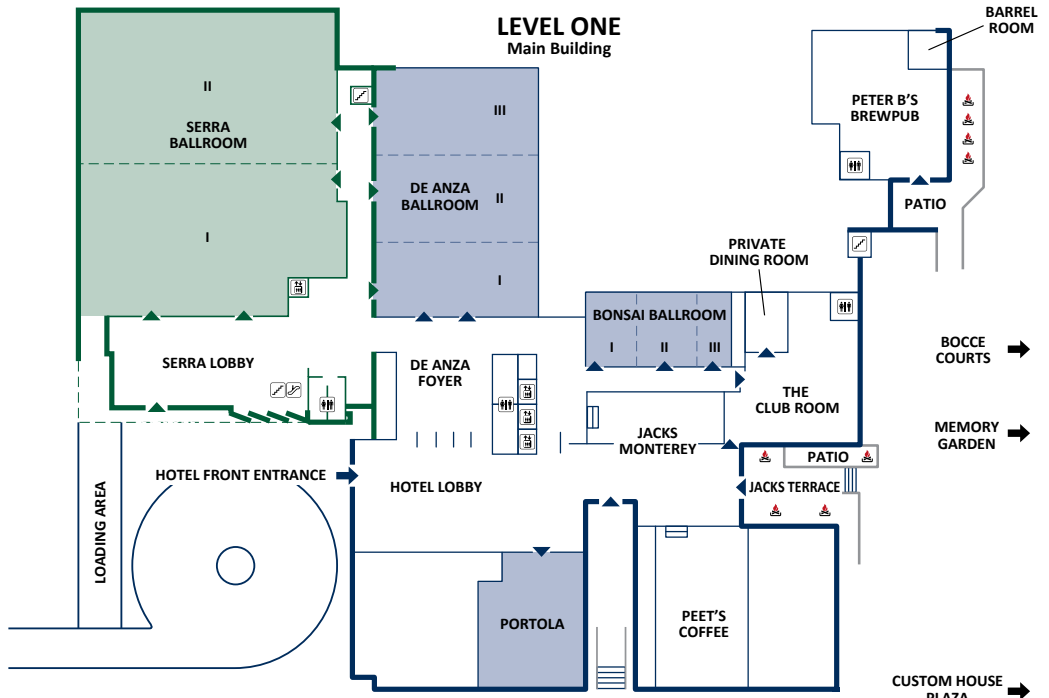
|                     |           |        |  |  |  |  |  |  |       |       |       |     |  |  |
|---------------------|-----------|--------|--|--|--|--|--|--|-------|-------|-------|-----|--|--|
| Stevenson Terrace   | 55' x 29' | 1,595  |  |  |  |  |  |  | 150   | 150   | 120   |     |  |  |
| Jeffers Plaza       |           | 4,200  |  |  |  |  |  |  | 160   | 400   | 160   |     |  |  |
| Cottonwood Plaza    |           |        |  |  |  |  |  |  | 120   | 200   | 120   |     |  |  |
| Memory Garden       |           |        |  |  |  |  |  |  | 330   | 500   | 330   | 330 |  |  |
| Upper Custom House* |           |        |  |  |  |  |  |  | 200   | 300   | 200   |     |  |  |
| Lower Custom House  |           | 28,750 |  |  |  |  |  |  | 1,200 | 1,500 | 1,200 |     |  |  |

## ON-SITE RESTAURANTS

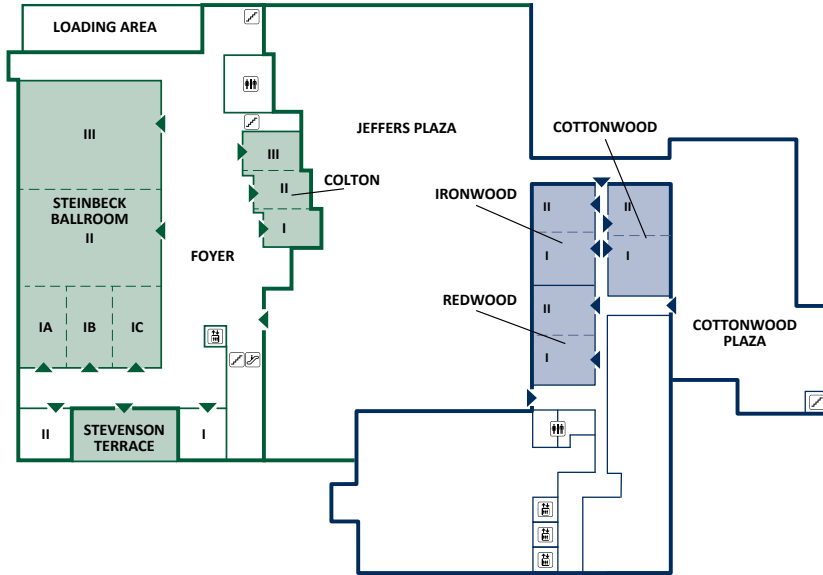
|                                     |           |       |       |  |     |  |    |  |     |     |     |  |  |  |
|-------------------------------------|-----------|-------|-------|--|-----|--|----|--|-----|-----|-----|--|--|--|
| The Club Room                       |           | 4,593 | 9'11" |  | 120 |  |    |  | 200 | 250 | 180 |  |  |  |
| Private Dining Room                 | 12' x 32' | 416   | 10'   |  |     |  | 22 |  | 24  | 24  |     |  |  |  |
| The Club Room Patio                 |           | 790   |       |  |     |  |    |  | 30  | 35  | 30  |  |  |  |
| Peter B's Brewpub                   |           | 4,090 |       |  |     |  |    |  | 180 | 180 | 180 |  |  |  |
| Barrel Room                         | 14' x 18' | 249   | 8'3"  |  |     |  | 16 |  | 16  | 16  |     |  |  |  |
| Peter B's Patio                     |           | 790   |       |  |     |  |    |  | 30  | 40  | 30  |  |  |  |
| Jacks Terrace                       |           | 2,666 |       |  |     |  |    |  | 100 | 200 | 100 |  |  |  |
| The Club Room Patio & Jacks Terrace |           | 3,456 |       |  |     |  |    |  | 130 | 235 | 130 |  |  |  |

\*Bocce Courts are located in Upper Custom House Plaza for an additional rental fee.

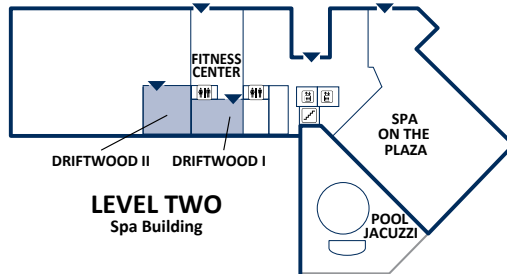
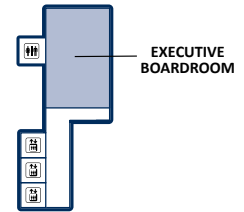




**LEVEL THREE**  
Main Building



**LEVEL SEVEN**  
Main Building



**LEVEL TWO**  
Spa Building

  
**PORTOLA HOTEL & SPA**  
AT MONTEREY BAY

- PORTOLA HOTEL & SPA
- MONTEREY CONFERENCE CENTER
-  ESCALATOR
-  STAIRWAY
-  ELEVATOR
-  STAIR ACCESS INTO ROOM
-  RESTROOMS
-  ENTRANCE
-  FIRE PIT

NOT TO SCALE